

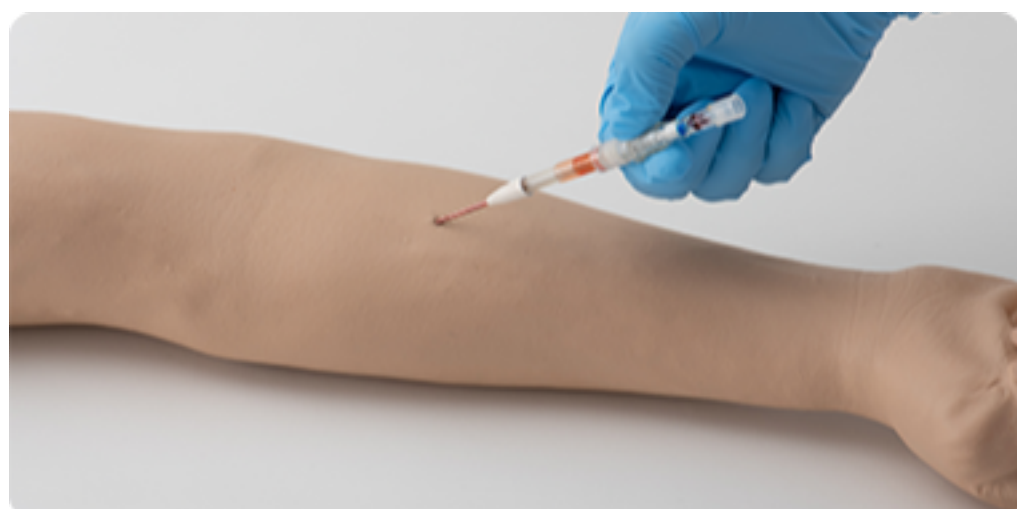
Supercath PRO



F&B

- **Built-in Check Valve**
 - Designed to assist digital pressure, aid in prevention of the blood outflow, and ease the temporary suspension of treatment
- **Passive Safety Mechanism**
 - Reduce needle stick injury by human error
 - No extra training
- **Inner needle fully encased into an extendable film cover**
 - Prevention from needle-stick injury. Only PP catheter left during each HD session.
- **Reduce patients pain with improved puncture performance**
 - Improved catheter surface treatment technology
 - Less puncture resistance than conventional Medikit products.
- **Blood control cap at the needle hub**
 - Prevents blood leakage and contamination
- **Smooth transition of inner needle and tip-tapered catheter**
 - Less pain on insertion process
- **EB sterilized**

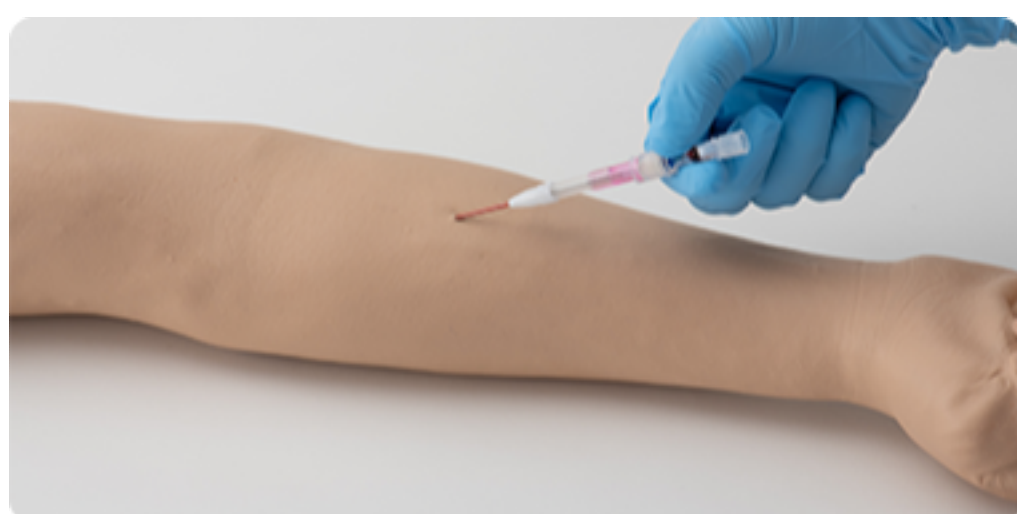
Supercath NEO



F&B

- **Passive Safety Mechanism**
 - Reduce needle stick injury by human error
 - No extra training
- **Inner needle fully encased into an extendable film cover**
 - Prevention from needle-stick injury. Only PP catheter left during each HD session.
- **Reduce patients pain with improved puncture performance**
 - Improved catheter surface treatment technology
 - Less puncture resistance than conventional Medikit products.
- **Blood control cap at the needle hub**
 - Prevents blood leakage and contamination
- **Smooth transition of inner needle and tip-tapered catheter**
 - Less pain on insertion process
- **EB sterilized**

Supercath Clampcath



F&B

- **Fluorine resin vascular access catheter for HD**
 - Less patient's discomfort
 - Less traumatic damage to vessel wall
 - Longer graft life
 - Ideal for restless patients by catheter softness
 - Ideal for patients with metallic allergy
- **Blood control cap at the needle hub**
 - Prevents blood leakage and contamination
- **Smooth transition of inner needle and tip-tapered catheter**
 - Less pain on insertion process
- **Fluorine resin catheter by one piece molding**
 - Smooth flow and ample flux